



IBI Group, a California Partnership  
 4119 Broad Street, Ste 210  
 San Luis Obispo, CA 93401

Ph: 546 0433

BULLETIN

**BAKERSFIELD CITY SCHOOL DISTRICT  
 BESSIE OWENS E.S. TEMPORARY RELOCATABLES**

BULLETIN NO. ONE (1) DATE: October 11, 2019

CLIENT / PROJECT: BAKERSFIELD CITY SCHOOL DISTRICT  
 BESSIE OWENS E.S. – ELECTRICAL, DATA, & FIRE ALARM FOR TEMPORARY RELOCATABLES

ARCHITECT'S PROJECT NO. 118932.000 DSA File No.:15-6  
 DSA Application No.: 03-120134

ARCHITECT: IBI Group  
 4119 Broad Street, Suite 210  
 San Luis Obispo, CA 93401

NOTICE TO ALL RESPONDENTS TO THE PROJECT SUBMITTING PROPOSALS FOR THIS WORK AND TO ALL PLAN HOLDERS:

You are hereby notified of the following Clarifications to the original APPROVED Documents. This Bulletin shall supersede the original APPROVED Documents and previous Addenda wherein it contradicts the same and shall take precedence over anything to the contrary therein. All other conditions remain UNCHANGED.

**A. CLARIFICATIONS TO DRAWINGS:**

**Owner Furnished-Owner Installed Items; (Not to be included in contract):**

1. Relocatable Placement including foundations and ramps.
2. Underground conduit. (With the exception of items listed under "Contractor Furnished -Contractor Installed", see below).
3. Underground Pull Boxes:
  - (3) Three have been installed at Bore Pit 4, west side of track. See attached E201, for location.

**Contractor Furnished-Contractor Installed Items**

1. All other bore pits will need to be cleaned out (due to previous water inundation), conduits trimmed and turned up.
2. Conduit from west side **Bore Pit 1** to Electrical gear, and new Data Room. See attached Sheet E200, for location.
3. Conduit from **Bore Pit 6** adjacent to the south Temp Admin Relocatables and PRC Relocatable. See attached Sheet E201 and E203.

**Owner Furnished Items – Contractor Installed.**

1. Data Cabinets
2. Intercom Wire
3. Fiber
4. Electrical Transformers and Panels for Relocatable Buildings

**Clarifications Items**


1. Use THHN wire (Thermoplastic/High Heat Resistant/Nylon Coated)
2. Use Rigid Sweeps at bore pits

CONFORMANCE WITH APPROVED DOCUMENTS

All addenda work shall be in strict conformance with the approved documents as they pertain to work of a similar nature.

IBI Group

BY:

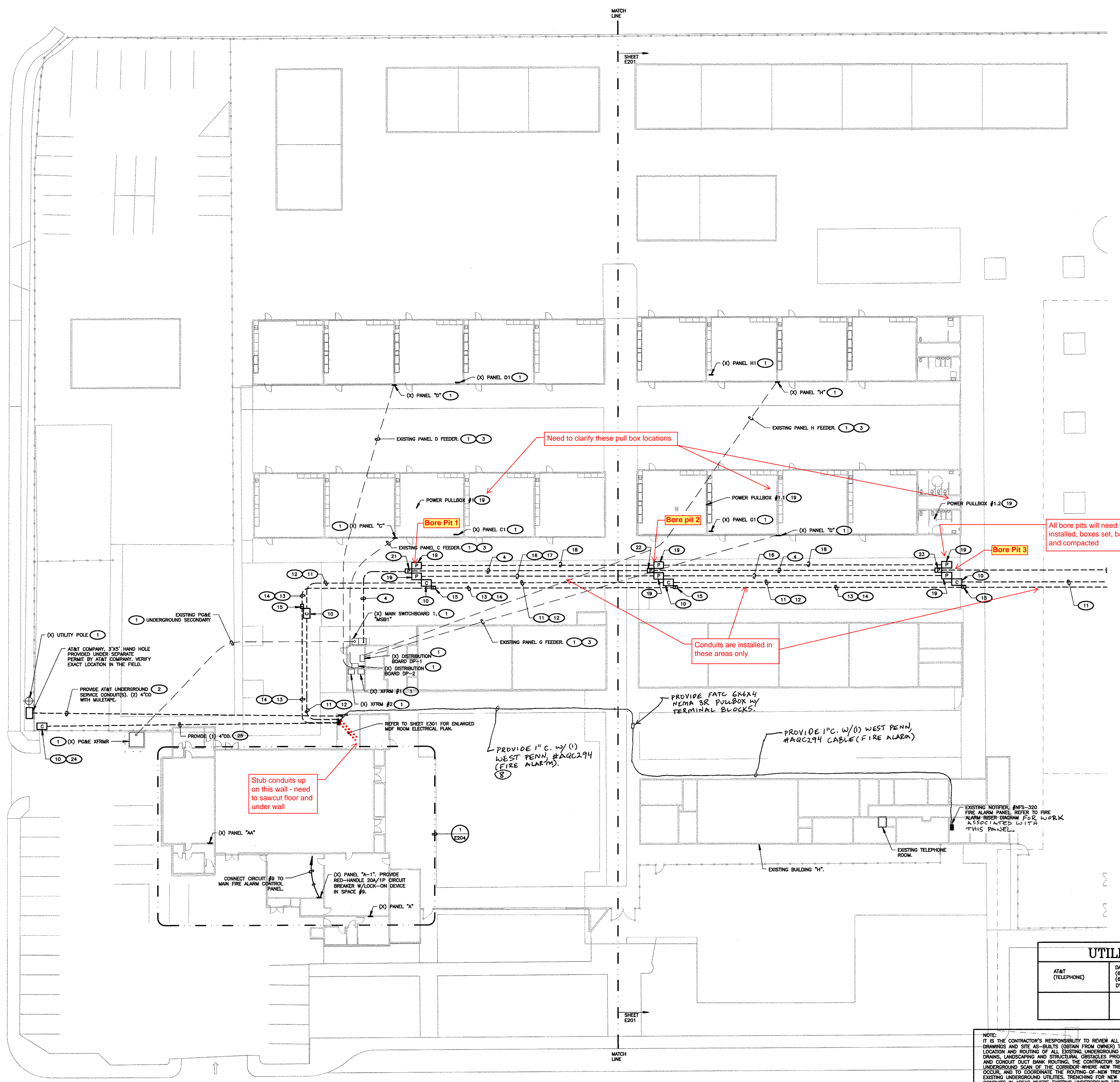
  
\_\_\_\_\_  
RICHARD MELLO, AIA      #C-18079

**SHEET NOTES**

- CONTRACTOR SHALL CALL UNDERGROUND SERVICE ALERT AT 811 TO LOCATE UNDERGROUND UTILITIES AT LEAST 2 WORKING DAYS PRIOR TO DIGGING. CONTRACTOR SHALL FIELD VERIFY LOCATION AND DEPTH OF EXISTING IMPROVEMENTS PRIOR TO START OF CONSTRUCTION.
- VERIFY LOCATION OF ALL BUILDINGS AND APPENDICES ON ARCHITECTURAL AND CIVIL PLANS.
- FIELD VERIFY LOCATION ON ALL UNDERGROUND UTILITIES PRIOR TO TRENCHING. SCHEDULE AND COORDINATE ALL SITE WORK WITH OWNER PRIOR TO ANY TRENCHING.
- CONTRACTOR SHALL VERIFY LOCATION & REQUIREMENTS OF ALL DEVICES/EQUIPMENT REQUIRING ELECTRICAL CONNECTION PRIOR TO BID PROPOSAL, ROUGH-IN, AND FINISH.
- CONTRACTOR SHALL IN ROUTING ALL CIRCUITS, INCREASE CONDUIT & CONDUIT SIZE TO ALLOW FOR VOLTAGE DROP SHOULD THE CONTRACTOR EXCEED ROUTING INDICATED ON DRAWINGS. ENGINEER OF RECORD MUST BE NOTIFIED PRIOR TO ANY DEVIATIONS FROM APPROVED PLAN CHECK (PERMIT SET) DRAWINGS.
- ALL 90 DEGREE CONDUIT BENDS AND RISERS SHALL BE PVC COATED RIGID STEEL.
- CONTRACTOR SHALL COORDINATE AND PROVIDE ALL SITE ELECTRICAL SERVICE REQUIREMENTS WITH SERVING UTILITY.
- ALL SERVICE ENTRANCE EQUIPMENT SHOP DRAWINGS SHALL BE SUBMITTED TO THE LOCAL UTILITY COMPANY FOR APPROVAL. WRITTEN APPROVAL RECEIVED PRIOR TO SUBMISSION TO ELECTRICAL ENGINEER FOR APPROVAL.
- VERIFY LOCATION OF ALL EQUIPMENT ON ARCHITECTURAL AND CIVIL PLANS.
- MINIMUM CONDUIT BURIAL DEPTH IS 24" 30" MINIMUM BELOW STREETS AND PARKING LOTS. FOR 0-600 VOLT SYSTEMS.
- PROVIDE CODE SIZED EQUIPMENT GROUNDING CONDUCTORS IN ALL OCCUPIED CONDUITS.
- 1" CONDUIT MINIMUM UNDERGROUND.
- COORDINATE WORK WITH OTHER TRADES. OBTAIN ALL DRAWINGS THAT WILL REQUIRE COORDINATION AND PROVIDE ALL ELECTRICAL CONNECTIONS, DEVICES, AND WIRING REQUIRED, WHETHER SHOWN ON THE ELECTRICAL DRAWINGS OR NOT.
- CONTRACTOR SHALL FURNISH AND INSTALL PULL BOXES AS REQUIRED TO INSTALL CONDUCTORS PER CONDUIT MANUFACTURER'S RECOMMENDATIONS, PER THE NATIONAL ELECTRICAL CODE, AND PER LOCAL AUTHORITIES HAVING JURISDICTION.
- FIELD CONDITIONS GOVERN DEMOLITION AND NEW CONSTRUCTION. PRIOR TO START OF WORK, THE ARCHITECT/ENGINEER SHALL BE NOTIFIED OF POSSIBLE FIELD PROBLEMS PRIOR TO DEMOLITION. CONTRACTOR SHALL NOTIFY DISTRICT REPRESENTATIVE OF WORK BEING PERFORMED. COORDINATE WITH DISTRICT REPRESENTATIVE.
- ALL EMPTY CONDUITS SHALL BE PROVIDED WITH DIMENSIONED NYLON PULL STRING.
- CONTRACTOR SHALL FIELD VERIFY LOCATION OF ALL UNDERGROUND UTILITIES PRIOR TO ANY EXCAVATION OR TRENCHING. CONTRACTOR SHALL PROTECT ALL EXISTING/REMAINING UTILITIES IN PLACE. CONTRACTOR, AT HIS SOLE EXPENSE, SHALL REPAIR ANY UTILITY SYSTEMS DAMAGED DURING CONSTRUCTION.
- VERIFY AND PROVIDE ALL UTILITY SYSTEMS PER SERVING UTILITY STANDARD REQUIREMENTS.
- CONTRACTOR SHALL PROVIDE CONCRETE ENCASUREMENT AT ALL VERIZON COMPANY CONDUIT BENDS PER VERIZON COMPANY REQUIREMENTS.

**KEY NOTES**

- (NOTE: THESE NOTES MAY NOT APPEAR ON ALL SHEETS)
- PROTECT IN PLACE.
  - VERIFY & PROVIDE PER UTILITY COMPANY REQUIREMENTS. SHOWN DIAGRAMATIC. EXACT ROUTING IS UNKNOWN.
  - REFER TO PROPOSED SINGLE LINE DIAGRAM FOR FEEDER INFORMATION.
  - REFER TO PROPOSED SINGLE LINE DIAGRAM.
  - PROVIDE 10"x17" TRAFFIC RATED PULLBOX WITH STEEL CHECKERED PLATE COVER ENGRAVED WITH "FIRE ALARM", #81017BOX, WITH #81017-51H COVER BY, CHRISTY CONCRETE.
  - PROVIDE 17"x30" TRAFFIC RATED PULLBOX W/STEEL CHECKERED PLATE COVER ENGRAVED WITH "COMMUNICATION", #81730BOX WITH #81730-51H COVER BY, CHRISTY CONCRETE.
  - ROUTE ON TOP OF COVERED WALKWAY.
  - ROUTE ALONG SIDE EXISTING BANK OF CONDUITS.
  - PROVIDE 24"x36" TRAFFIC RATED PULLBOX W/STEEL CHECKERED PLATE COVER ENGRAVED WITH "COMMUNICATION", #82436-51H COVER BY, CHRISTY CONCRETE.
  - PROVIDE 3" C W/ (5) 12 STRAND MULTIMODE FIBER & (5) 12-PAR 24 AWG. PROVIDE 3" CO (SPARE).
  - PROVIDE (3) 3" CO (SPARE) COMMUNICATIONS.
  - PROVIDE 2" C W/ (5) WEST PENN. #80224 CABLES (221A 2' FOR ANNUNCIATOR) & (1) #80224 CABLE (1) & (1) #80227 (POWER ANNUNCIATOR).
  - PROVIDE (4) 2" CO (SPARE) FIRE ALARM.
  - PROVIDE 17"x30" TRAFFIC RATED PULLBOX W/STEEL CHECKERED PLATE COVER ENGRAVED WITH "FIRE ALARM", #81730BOX WITH #81730-51H COVER BY, CHRISTY CONCRETE.
  - PROVIDE (4) 3" CO (SPARE FOR FUTURE K1,K2,K3, & K4).
  - PROVIDE (4) 2" CO (SPARE FOR (4) CLASSROOM BLDG. ROOF PANELS).
  - PROVIDE (6) 3" CO (SPARE FOR FUTURE 21 CLASSROOMS).
  - PROVIDE 30"x48" TRAFFIC RATED PULLBOX W/STEEL CHECKERED PLATE COVER ENGRAVED WITH "ELECTRIC", #83048-51H COVER BY, CHRISTY CONCRETE.
  - PROVIDE (2) 2" CO (SPARE) FIRE ALARM.
  - POWER PULLBOX #1. REFER TO PROPOSED SINGLE LINE DIAGRAM FOR SPECIFICATION.
  - POWER PULLBOX #1.1. REFER TO PROPOSED SINGLE LINE DIAGRAM FOR SPECIFICATION.
  - POWER PULLBOX #1.2. REFER TO PROPOSED SINGLE LINE DIAGRAM FOR SPECIFICATION.
  - COORDINATE EXACT LOCATION WITH BCSD PRIOR TO ROUGH-IN.
  - STUB-UP AT MAIN TELEPHONE BACKBOARD LOCATION.



UTILITY CONTACTS	
AT&T (TELEPHONE)	DALE YOUNGBLOOD (861) 546-4252 (OFFICE) (861) 330-4274 (CELL) DY2482@ATT.COM (E-MAIL)

NOTE: IT IS THE CONTRACTOR'S RESPONSIBILITY TO REVIEW ALL CIVIL ENGINEERING DRAWINGS AND SITE AS-BUILTS (OBTAIN FROM OWNER) TO IDENTIFY THE LOCATION AND ROUTING OF ALL EXISTING UNDERGROUND UTILITIES, METERS, DRAINS, LANDSCAPING AND STRUCTURAL OBSTACLES PRIOR TO TRENCHING AND CONDUIT DUCT BANK ROUTING. THE CONTRACTOR SHALL CONDUCT AN UNDERGROUND SCAN OF THE CORRIDOR WHERE NEW TRENCHING SHALL OCCUR, AND TO COORDINATE THE ROUTING OF NEW TRENCHING IN AREAS OF EXISTING UNDERGROUND UTILITIES. TRENCHING FOR NEW UNDERGROUND CONDUITS IN AREAS WHERE EXISTING UNDERGROUND UTILITIES ARE PRESENT, WHETHER SHOWN ON THESE PLANS OR NOT, SHALL BE EXCAVATED BY HAND AND WITH EXTREME CAUTION SO AS NOT TO DISTURB EXISTING UTILITIES. CONTRACTOR SHALL PROMPTLY REPAIR DAMAGE TO OWNER'S SATISFACTION. UNDERGROUND POWER AND COMMUNICATION PULL BOXES WHERE SHOWN ON THE SITE PLAN TO BE RELOCATED TO A POSITION AS CLOSE AS POSSIBLE TO THE LOCATION SHOWN ON THE DRAWING. CONTRACTOR SHALL PROMPTLY NOTIFY OWNER IF ANY EXISTING UTILITY OR IRRIGATION LINE IS DAMAGED, AND SHALL PROMPTLY REPAIR DAMAGE TO OWNER'S SATISFACTION.



AGENCY INFORMATION:

AGENCY TRACKING NO. 63321-355  
FILE NO.

IDENTIFICATION STAMP  
DIV. OF THE STATE ARCHITECT  
OFFICE OF REGULATION SERVICES  
03-120134  
AC. 11.5 11.5 88.0  
DATE SEP 30 2019

SEAL

COPYRIGHT:  
Any reproduction or distribution for any purpose other than authorized by IBI Group is forbidden.

COPYRIGHT 2019 IBI GROUP

REVISIONS

NO.	DATE SUBMITTED	DATE APPROVED	DESCRIPTION

CONSULTANT

**FERRANTI ENGINEERING**  
CONSULTING  
ELECTRICAL ENGINEERS  
1211 MARICOPA HWY,  
SUITE 250  
OJAI, CA 93023  
(805) 705-4772  
DALEFERRANTI@LIVE.COM

PRIME CONSULTANT

**IBI** ARCHITECTURE PLANNING  
San Luis Obispo  
4119 Broad Street, Suite 210  
San Luis Obispo, CA 93401  
805.546.0433  
fax: 805.546.0504  
ibigroup.com

**BAKERSFIELD CITY SCHOOL DISTRICT**

**BESSIE OWENS E.S. TEMPORARY MODULAR BUILDINGS**  
815 POTOMAC AVE, BAKERSFIELD, CA 93307

OPSC or OSHPD PROJ. NO. N/A  
PROJECT NO: 118932  
DRAWN BY: V.Z.  
CHKD BY: D.F.  
ISSUE DATE: 8/19/2019  
SHEET TITLE

**PARTIAL SITE ELECTRICAL PLAN (WEST)**

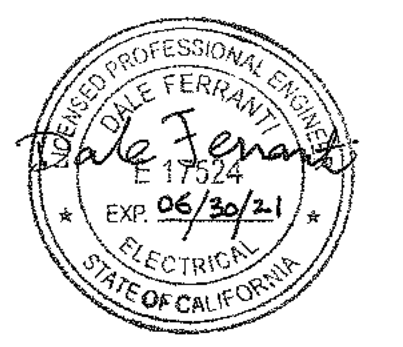
SHEET NUMBER

**E200**



REVISIONS			
NO.	DATE SUBMITTED	DATE APPROVED	DESCRIPTION

CONSULTANT  
**FERRANTI ENGINEERING**  
CONSULTING  
ELECTRICAL ENGINEERS  
1211 MARICOPA HWY,  
SUITE 250  
OJAI, CA 93023  
(805) 705-4772  
DALEFERRANTI@LIVE.COM



PRIME CONSULTANT  
**IBI** ARCHITECTURE PLANNING  
San Luis Obispo  
4119 Broad Street, Suite 210  
San Luis Obispo, CA 93401  
805.546.0433  
fax: 805.546.0504  
ibigroup.com

**BAKERSFIELD CITY SCHOOL DISTRICT**  


**BESSIE OWENS E.S. TEMPORARY MODULAR BUILDINGS**  
815 POTOMAC AVE, BAKERSFIELD, CA 93307

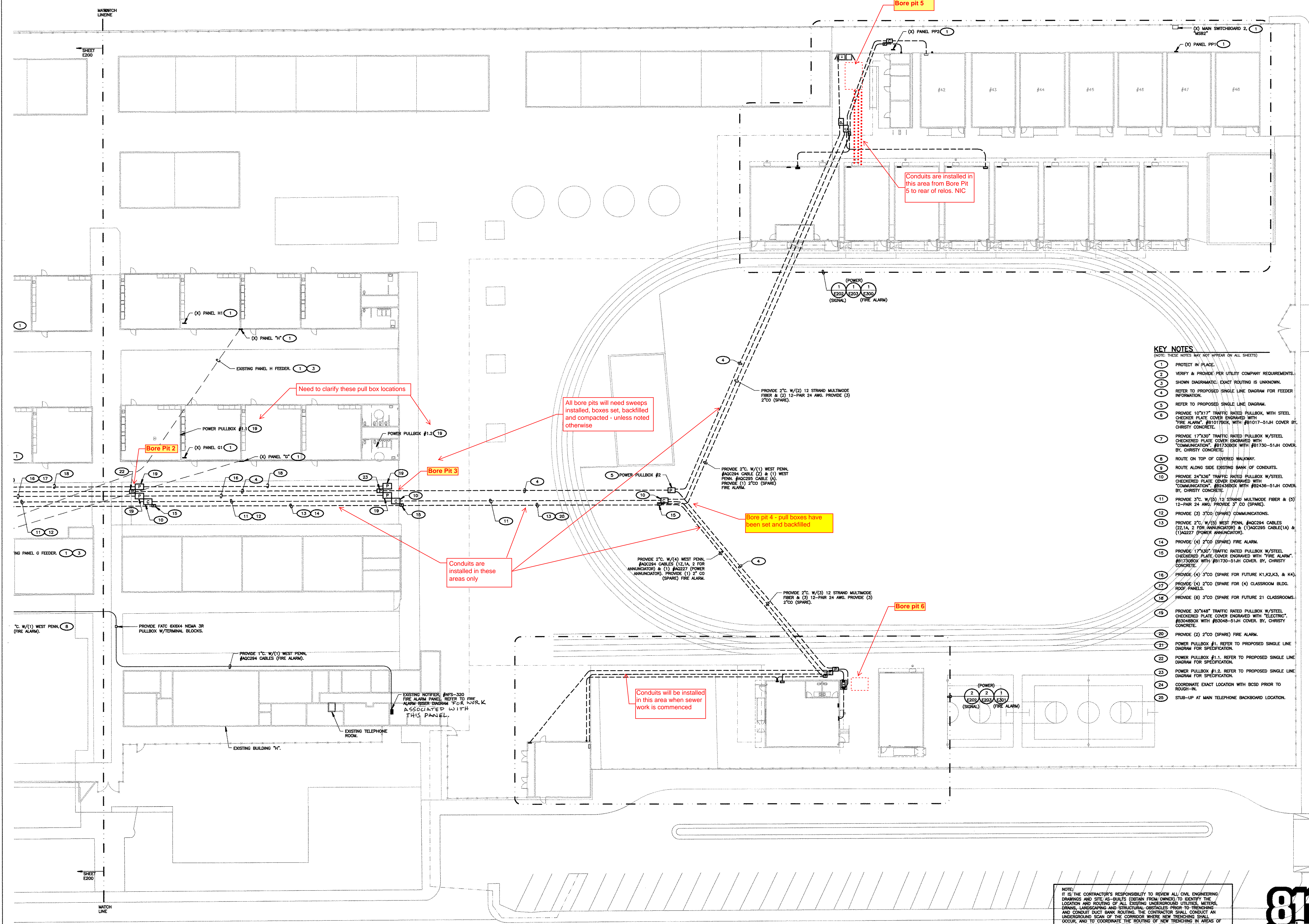
OPSC or OSHPD PROJ. NO.	N/A
PROJECT NO.	118932
DRAWN BY:	V.Z.
CHK'D BY:	D.F.
ISSUE DATE:	8/19/2019

**PARTIAL SITE ELECTRICAL PLAN (EAST)**

SHEET NUMBER

**E201**

CONSTRUCTION DOCUMENTS



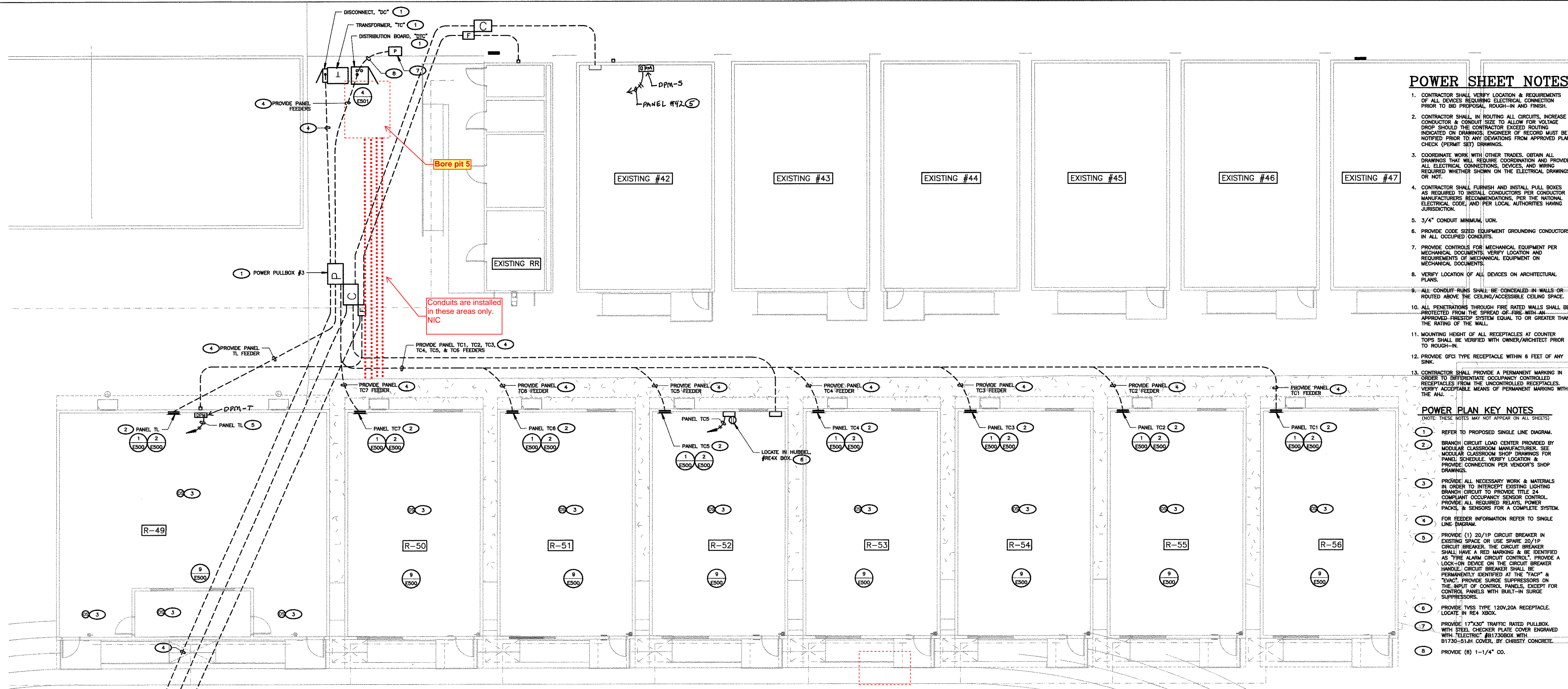
- KEY NOTES**  
(NOTE: THESE NOTES MAY NOT APPEAR ON ALL SHEETS)
- PROTECT IN PLACE.
  - VERIFY & PROVIDE PER UTILITY COMPANY REQUIREMENTS. SHOWN DIAGRAMATIC. EXACT ROUTING IS UNKNOWN.
  - REFER TO PROPOSED SINGLE LINE DIAGRAM FOR FEEDER INFORMATION.
  - REFER TO PROPOSED SINGLE LINE DIAGRAM.
  - PROVIDE 10"x17" TRAFFIC RATED PULLBOX WITH STEEL CHECKER PLATE COVER ENGRAVED WITH "COMMUNICATION", #81730BOX WITH #81730-51.4H COVER BY, CHRISTY CONCRETE.
  - ROUTE ALONG SIDE EXISTING WALKWAY.
  - ROUTE ALONG SIDE EXISTING BANK OF CONDUITS.
  - PROVIDE 24"x36" TRAFFIC RATED PULLBOX W/STEEL CHECKERED PLATE COVER ENGRAVED WITH "COMMUNICATION", #82436-51.4H COVER BY, CHRISTY CONCRETE.
  - PROVIDE 3" C.W.(6) 12 STRAND MULTIMODE FIBER & (3) 12-PAR 24 AWG. PROVIDE 3" CO (SPARE).
  - PROVIDE (3) 3" CO (SPARE) COMMUNICATIONS.
  - PROVIDE 2" C.W.(3) WEST PENN. #40234 CABLES (2) 12.1A, 2 FOR ANNUNCIATOR) & (1) #40227 (POWER ANNUNCIATOR). PROVIDE (1) 2" CO (SPARE) FIRE ALARM.
  - PROVIDE (4) 2" CO (SPARE) FIRE ALARM.
  - PROVIDE 17"x30" TRAFFIC RATED PULLBOX W/STEEL CHECKERED PLATE COVER ENGRAVED WITH "FIRE ALARM", #81730BOX WITH #81730-51.4H COVER BY, CHRISTY CONCRETE.
  - PROVIDE (4) 3" CO (SPARE FOR FUTURE K1,K2,K3, & K4).
  - PROVIDE (4) 2" CO (SPARE FOR (4) CLASSROOM BLDG. ROOF PANELS).
  - PROVIDE (8) 3" CO (SPARE FOR FUTURE 21 CLASSROOMS).
  - PROVIDE 30"x48" TRAFFIC RATED PULLBOX W/STEEL CHECKERED PLATE COVER ENGRAVED WITH "ELECTRIC", #83438BOX WITH #83438-51.4H COVER BY, CHRISTY CONCRETE.
  - PROVIDE (2) 2" CO (SPARE) FIRE ALARM.
  - POWER PULLBOX #1. REFER TO PROPOSED SINGLE LINE DIAGRAM FOR SPECIFICATION.
  - POWER PULLBOX #1.1. REFER TO PROPOSED SINGLE LINE DIAGRAM FOR SPECIFICATION.
  - POWER PULLBOX #1.2. REFER TO PROPOSED SINGLE LINE DIAGRAM FOR SPECIFICATION.
  - COORDINATE EXACT LOCATION WITH BCSD PRIOR TO ROUGH-IN.
  - STUB-UP AT MAIN TELEPHONE BACKBOARD LOCATION.

NOTE:  
IT IS THE CONTRACTOR'S RESPONSIBILITY TO REVIEW ALL CIVIL ENGINEERING DRAWINGS AND SITE AS-BUILTS (OBTAIN FROM OWNER) TO IDENTIFY THE LOCATION AND ROUTING OF ALL EXISTING UNDERGROUND UTILITIES, METERS, DRAINS, LANDSCAPING AND STRUCTURAL OBSTACLES PRIOR TO TRENCHING AND CONDUIT DUCT BANK ROUTING. THE CONTRACTOR SHALL CONDUCT AN UNDERGROUND SCAN OF THE CORRIDOR WHERE NEW TRENCHING SHALL OCCUR, AND TO COORDINATE THE ROUTING OF NEW TRENCHING AREAS OF EXISTING UNDERGROUND UTILITIES. TRENCHING FOR NEW UNDERGROUND CONDUITS IN AREAS WHERE EXISTING UNDERGROUND UTILITIES ARE PRESSENT, WHETHER SHOWN ON THESE PLANS OR NOT, SHALL BE EXECUTED BY HAND AND WITH EXTREME CAUTION SO AS NOT TO DISTURB EXISTING UTILITIES. CONTRACTOR SHALL PROMPTLY REPAIR DAMAGE TO OWNER'S SATISFACTION. UNDERGROUND POWER AND COMMUNICATION PULL BOXES WHERE SHOWN ON THE SITE PLAN TO BE RELOCATED TO A POSITION AS CLOSE AS POSSIBLE TO THE LOCATION SHOWN ON THE DRAWING. CONTRACTOR SHALL PROMPTLY NOTIFY OWNER IF ANY EXISTING UTILITY OR IRRIGATION LINE IS DAMAGED, AND SHALL PROMPTLY REPAIR DAMAGE TO OWNER'S SATISFACTION.



**1 PARTIAL SITE ELECTRICAL PLAN (EAST)**  
SCALE: 1" = 20'-0"





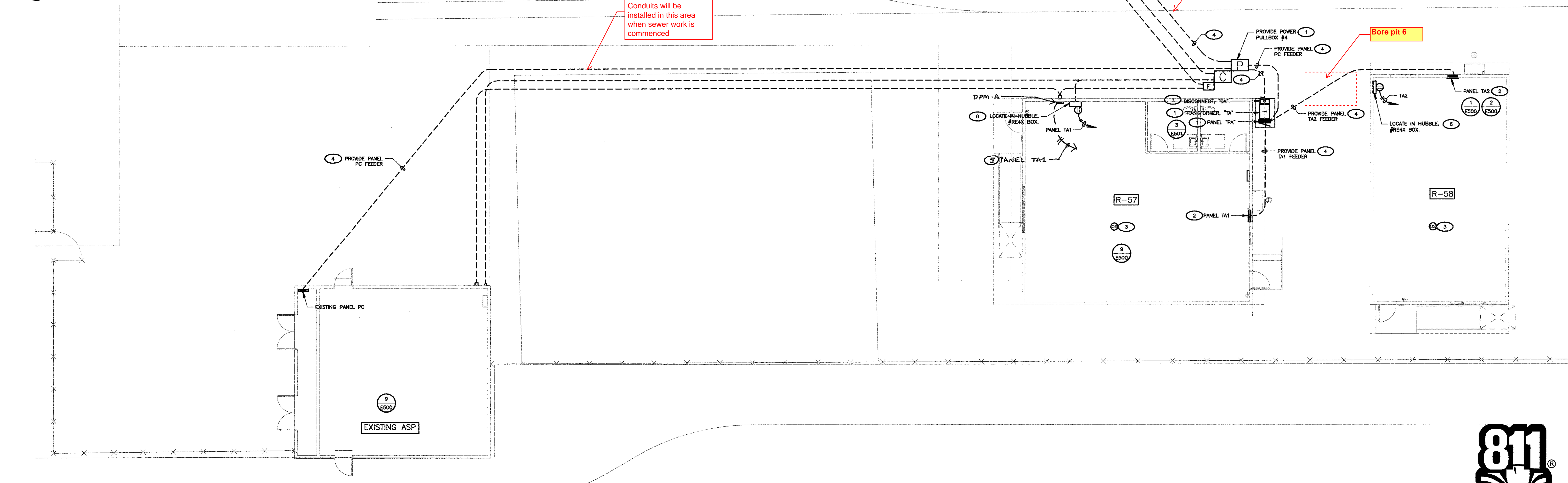
**POWER SHEET NOTES**

- CONTRACTOR SHALL VERIFY LOCATION & REQUIREMENTS OF ALL DEVICES REQUIRING CONNECTION PRIOR TO BID PROPOSAL, ROUGH-IN AND FINISH.
- CONTRACTOR SHALL, IN ROUTING ALL CIRCUITS, INCREASE CONDUCTOR & CONDUIT SIZE TO ALLOW FOR VOLTAGE DROP SHOULD THE CONTRACTOR EXCEED ROUTING INDICATED ON DRAWINGS. ENGINEER OF RECORD MUST BE NOTIFIED PRIOR TO ANY DEVIATIONS FROM APPROVED PLAN CHECK (PERMIT SET) DRAWINGS.
- COORDINATE WORK WITH OTHER TRADES. OBTAIN ALL DRAWINGS THAT WILL REQUIRE COORDINATION AND PROVIDE ALL ELECTRICAL CONNECTIONS, DEVICES, AND WIRING REQUIRED WHETHER SHOWN ON THE ELECTRICAL DRAWINGS OR NOT.
- CONTRACTOR SHALL FURNISH AND INSTALL PULL BOXES AS REQUIRED TO INSTALL CONDUCTORS PER CONDUCTOR MANUFACTURER'S RECOMMENDATIONS, PER THE NATIONAL ELECTRICAL CODE, AND PER LOCAL AUTHORITIES HAVING JURISDICTION.
- 3/4" CONDUIT MINIMUM, UNLESS NOTED.
- PROVIDE CODE SEED EQUIPMENT GROUNDING CONDUCTORS IN ALL OCCUPIED CONDOLITS.
- PROVIDE CONTROLS FOR MECHANICAL EQUIPMENT PER MECHANICAL DOCUMENTS. VERIFY LOCATION AND REQUIREMENTS OF MECHANICAL EQUIPMENT ON MECHANICAL DOCUMENTS.
- VERIFY LOCATION OF ALL DEVICES ON ARCHITECTURAL PLANS.
- ALL CONDUIT RUNS SHALL BE CONCEALED IN WALLS OR ROUTED ABOVE THE CEILING/ACCESSIBLE CEILING SPACE.
- ALL PENETRATIONS THROUGH FIRE RATED WALLS SHALL BE PROTECTED FROM THE SPREAD OF FIRE WITH AN APPROVED FIRESTOP SYSTEM EQUAL TO OR GREATER THAN THE RATING OF THE WALL.
- MOUNTING HEIGHT OF ALL RECEPTACLES AT COUNTER TOPS SHALL BE VERIFIED WITH OWNER/ARCHITECT PRIOR TO ROUGH-IN.
- PROVIDE GFCI TYPE RECEPTACLE WITHIN 6 FEET OF ANY SINK.
- CONTRACTOR SHALL PROVIDE A PERMANENT MARKING IN ORDER TO DIFFERENTIATE OCCUPANCY CONTROLLED RECEPTACLES FROM THE UNCONTROLLED RECEPTACLES. VERIFY ACCEPTABLE MEANS OF PERMANENT MARKING WITH THE AIA.

**POWER PLAN KEY NOTES**

- (NOTE: THESE NOTES MAY NOT APPEAR ON ALL SHEETS)
- REFER TO PROPOSED SINGLE LINE DIAGRAM.
  - BRANCH CIRCUIT LOAD CENTER PROVIDED BY MODULAR CLASSROOM MANUFACTURER. SEE MODULAR CLASSROOM SHOP DRAWINGS FOR PANEL SCHEDULE. VERIFY LOCATION & PROVIDE CONNECTION PER VENDOR'S SHOP DRAWINGS.
  - PROVIDE ALL NECESSARY WORK & MATERIALS IN ORDER TO INTERCEPT EXISTING LIGHTING BRANCH CIRCUIT TO PROVIDE THE 24 COMPLIANT OCCUPANCY SENSOR CONTROL. PROVIDE ALL REQUIRED RELAYS, POWER PACKS & SENSORS FOR A COMPLETE SYSTEM.
  - FOR FEEDER INFORMATION REFER TO SINGLE LINE DIAGRAM.
  - PROVIDE (1) 20/1P CIRCUIT BREAKER IN EXISTING SPACE OR USE SERVO 20/1P CIRCUIT BREAKER. THE CIRCUIT BREAKER SHALL HAVE A RED MARKING BE IDENTIFIED AS "FIRE ALARM CIRCUIT CONTROL". PROVIDE A LOCK-ON DEVICE ON THE CIRCUIT BREAKER HANDLE. CIRCUIT BREAKER SHALL BE PERMANENTLY IDENTIFIED AT THE "FACE" & "BACK". PROVIDE SURGE SUPPRESSORS ON THE INPUT OF CONTROL PANELS, EXCEPT FOR CONTROL PANELS WITH BUILT-IN SURGE SUPPRESSORS.
  - PROVIDE 1/2" TYPE 120V/20A RECEPTACLE. LOCATE IN RED XBOX.
  - PROVIDE 17"x30" TRAFFIC RATED PULLBOX WITH STEEL CHECKER PLATE COVER ENGRAVED WITH "ELECTRICAL" & "PULLBOX" WITH B1730-51.H COVER, BY CHRISTY CONCRETE.
  - PROVIDE (8) 1-1/4" CO.

**1 POWER PLAN (TEMP CLASSROOMS)**  
SCALE: 1/8"=1'-0"



**2 POWER PLAN (TEMP ADMIN/PARENT CENTER)**  
SCALE: 1/8"=1'-0"

AGENCY INFORMATION:

AGENCY TRACKING NO. 63321-355  
FILE NO.

IDENTIFICATION STAMP  
DIV. OF THE STATE ARCHITECT  
OFFICE OF REGULATOR SERVICES  
**03-120134**  
AC. / SEP 13 0 2019  
DATE

SEAL

COPYRIGHT:  
Any reproduction or distribution for any purpose other than authorized by IBI Group is forbidden.

COPYRIGHT 2019 IBI GROUP

REVISIONS

NO.	DATE SUBMITTED	DATE APPROVED	DESCRIPTION

CONSULTANT

**FERRANTI ENGINEERING**  
CONSULTING ELECTRICAL ENGINEERS  
1211 MARI COPA HWY,  
SUITE 250  
OJAI, CA 93023  
(805) 705-4772  
DALEFERRANTI@LIVE.COM

PRIME CONSULTANT

**IBI** ARCHITECTURE PLANNING  
San Luis Obispo  
4119 Broad Street, Suite 210  
San Luis Obispo, CA 93401  
805.546.0433  
fax: 805.546.0504  
ibigroup.com

BAKERSFIELD CITY SCHOOL DISTRICT

**BESSIE OWENS E.S. TEMPORARY MODULAR BUILDINGS**  
815 POTOMAC AVE, BAKERSFIELD, CA 93307

OPSC or OSHPD PROJ. NO. N/A  
PROJECT NO: 118932  
DRAWN BY: V.Z.  
CHK'D BY: D.F.  
ISSUE DATE: 8/19/2019  
SHEET TITLE

**POWER PLAN (TEMP CLASSROOM/ADMIN, & PARENT CENTER)**

SHEET NUMBER

**E203**



CONSTRUCTION DOCUMENTS